

Annual Divisional Update

Community Health Division

Board Presentation Date: April 7, 2015

Presentation Overview

- Division Profile
 - ▶ Services and Programs
 - ▶ Staff complement and Budget
- Key Priorities
 - ▶ Supporting Health PEI's strategic direction
 - ▶ Supporting divisional operations
- Questions

Profile of Division

Primary Care and Chronic Disease

- Primary Care
- Chronic Disease Prevention and Management

Home Care, Palliative & Geriatric Care

- Home Care and Adult Protection
- Integrated Palliative Care & Palliative Care Centre
- Provincial Geriatric Program

Public Health and Children's Developmental Services

- Public Health
- Dental Health
- Speech Language Pathology/Audiology
- Pediatric Psychology Unit

Aboriginal Health

- Health Policy and Planning Forum

Profile of Division

Functional Area	2014-15 Staff Complement (FTE)	2014-15 Operating Budget
Executive Director's office	4.0	\$451,600
Primary Care and Chronic Disease	125.15	\$12,402,200
Public Health and Children's Developmental Services	102.80	\$10,332,800
Home Care, Palliative and Geriatric Care	185.00	\$17,240,800
Total	415.95	\$40,427,400

Priorities

- ❖ Supporting Health PEI's Strategic Direction
 1. Children with Complex Needs
 2. Frail Seniors with Complex Health Needs
 3. Access to Primary Care Providers
 4. Integrated Chronic Disease Prevention and Management
 5. Integrated Palliative Care Program

- ❖ Supporting divisional operations
 1. Visible Leadership and Quality Boards
 2. Advancing the Baby Friendly Initiative
 3. Framework for Vulnerable Populations

Children with Complex Needs

- **Purpose**

- ▶ To improve coordination, access and efficiencies of HPEI-based services which support children with complex needs and their families.

- **Update on the status**

- ▶ Key deliverables to date:

- New positions being staffed (stabilization plan)
- Preschool Autism Assessments -- wait time reduction from 22 to 16 months
- Internal provider survey: preliminary/emerging themes
 - high % of staff time spent on social determinant issues (poverty, housing, parental mental health issues);
 - lack of wait times targets for some services
 - high level of support from providers to families.

- ▶ **Focus for 2015**

- Confirm model for preschool assessment teams
- Utilize survey data to confirm or readjust priorities
- Expand focus to include youth and young adults

Children with Complex Needs

Service	New Positions & Status	WAIT TIMES August 2014	WAIT TIMES Current	WAIT TIMES Planned Future
Preschool Autism Assessments (Pediatric Psychology)	1.0 Psychologist (PhD): Ongoing Recruitment	22 months	16 months	11 months or lower
Audiology	1.0 Audiology Assistant: Interview stage	12 months (Central Auditory Processing Assessments)	11 months	6 months
Speech Language Pathology	0.5 SLP Assistant: Interview stage	4 months (Charlottetown)	4 months (Charlottetown)	3 months plus assistance to parents on autism wait List
Orthoptics	0.4 Orthoptist: Filled	3+ months	2-3 months	1 month
Occupational Therapy	0.8 OT (QEH): Filled 1.0 OT (Schools): Awaiting Classification 0.6 Med. Secretary: Filled	1-4 months No current OT for school aged in Queens	Preschool -- 2 mos Urgents -- 1 wk kindergarten -- 2-4 mos No OT in schools in Queens, despite multiple requests	2 weeks – 3 months. plus school therapy and more intervention
Physiotherapy	0.8 PT: Filled 0.6 PT: Filled 1.0 Rehab Assistant: Awaiting classification (have assist 1day/wk)	2 weeks – 3 months (wait times reflect the addition of a 1 temp unfunded position)	Priority 1: 3-5 days Priority 2: 1-2 weeks Priority 3: within the month	Similar for new assessments, plus more intervention
Provincial Coordination	1.0 Coordinator: Filled			

#2: Frail Seniors with Complex Health Needs

- **Purpose**

- ▶ To improve access to care for frail seniors with complex health needs.

- **Update on the status**

- ▶ Key deliverables to date:

- Nurse practitioner added to Provincial Geriatric Program (Sept 2014)
- 6 project areas identified, all focused on partnerships and integration of care across program/service areas
- Feature project: COACH Team & Frail Senior Care Pathway

- ▶ Focus for 2015:

- COACH Team pilot (Montague) – Jan to Oct 2015
- Complete project on hours of care provided to frail seniors – Jan to Mar 2015
- Initiate project with acute care (ED) – TBC Feb/Mar 2015 planning to begin
- Develop future plan for Home Care for consideration and approval

#3. Access to Primary Care Providers

- **Purpose**

- ▶ Improve access to primary care services in a timely fashion with the goal to improve health, reduce ED visits, hospitalization, re-hospitalization and ALOS.

- **Update on the status**

- ▶ Key deliverables to date:

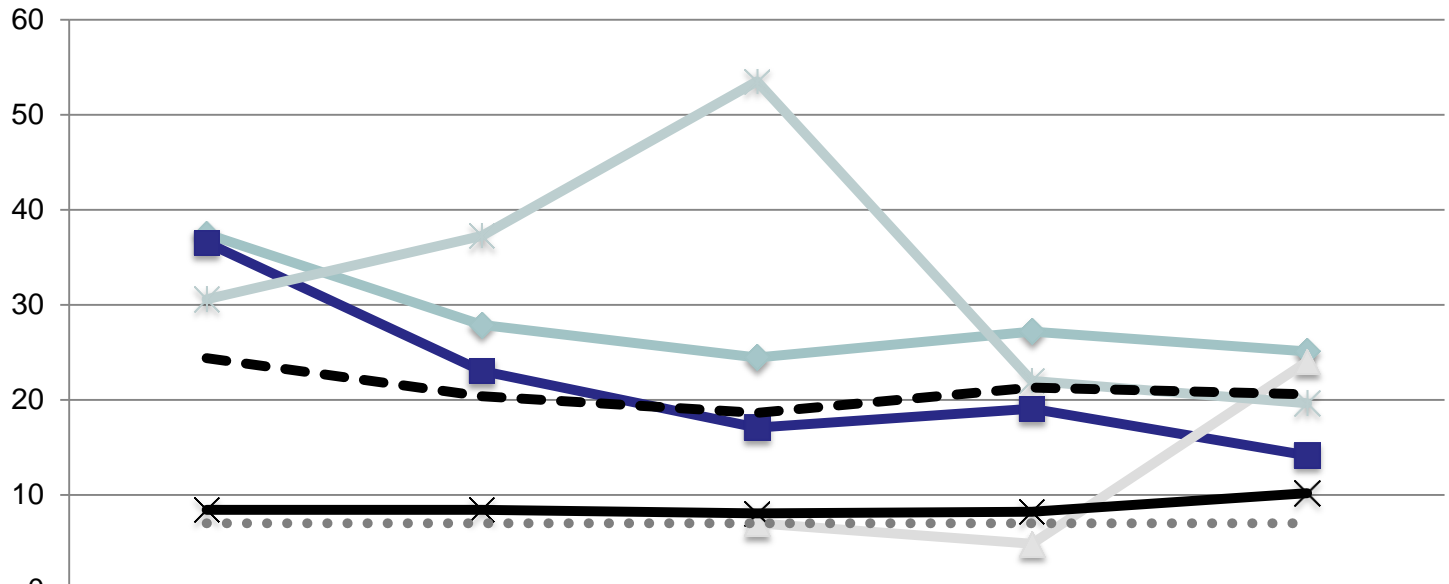
- 15 advance clinical access (ACA) projects completed /wrapping up in April
- Panel size policy approved by ELT with one outstanding issue
- Collaborative teams expanded to include dietitians
- Collaborative Family Practice Incentive Program (35 physicians participating)

- ▶ Focus for 2015:

- Collaborative mental health (Pending PBMA funding)
- ACA rollout
- Develop future plan for primary care for consideration and approval

Access to Primary Care Providers

Provincial Comparison of Primary Care Network Wait Times to Thrid Next Available Appointment



	Oct-Dec 13/14	Jan-Mar 13/14	Apr-Jun 14/15	Jul-Sep 14/15	Oct-Dec 14/15
East Prince	37.5	27.9	24.5	27.2	25.1
Kings	36.6	23.0	17.1	19.1	14.1
Queens East^			7.0	4.9	24.0
Queens West	8.4	8.4	8.1	8.2	10.2
West Prince^	30.6	37.3	53.5	22.0	19.6
Provincial Avg	24.4	20.4	18.6	21.3	20.6
Target	7.0	7.0	7.0	7.0	7.0

#4: Integrated Chronic Disease Prevention & Management

- **Purpose**

- ▶ To improve the quality of chronic disease care through enhanced integration of prevention and management efforts.

- **Update on the status**

- ▶ Key deliverables to date:

- Diabetes strategy released and insulin pump program launched
- Cancer strategy developed (release pending) and lung and breast cancer action groups launched
- Remote Patient Monitoring for Heart Failure funding secured
- IHI – Triple Aim Project on Better Health Lower Cost initiated

- ▶ Focus for 2015:

- Cancer, heart failure and diabetes implementation
- IHI – Triple Aim Project on Better Health Lower Costs completion and sustaining

#5: Provincial Integrated Palliative Care

- **Purpose**

- ▶ To develop an integrated collaborative approach which promotes flexible, seamless, patient-centred, quality palliative care for Islanders in the setting of their choice

- **Update on the status**

- ▶ Key deliverables to date:

- ▶ New Provincial Palliative Care Centre built (operational April 1, 2015)
- ▶ Project charter for 3-5 year plan approved by ELT
- ▶ Paramedics providing palliative care at home project launched

- ▶ Focus for 2015:

- ▶ Development of day/outpatient program at new centre
- ▶ 3-5 year plan developed
- ▶ Paramedic/palliative project program implemented

2014 Priorities Closed Out

- **Insulin Pump Program**
 - Initiative has moved into operations
 - Will be monitored by the director responsible for Chronic Disease
- **Community Dietitian Review**
 - Implementation of recommendations have been moved into operations
 - Will be monitored by the director responsible for Public Health and Family Nutrition
- **Organized Stroke Model**
 - Phase 1 and 2 implemented
 - Phase 3 (community reintegration) and expansion of secondary stroke prevention continue to be priorities



Health PEI

One Island Health System